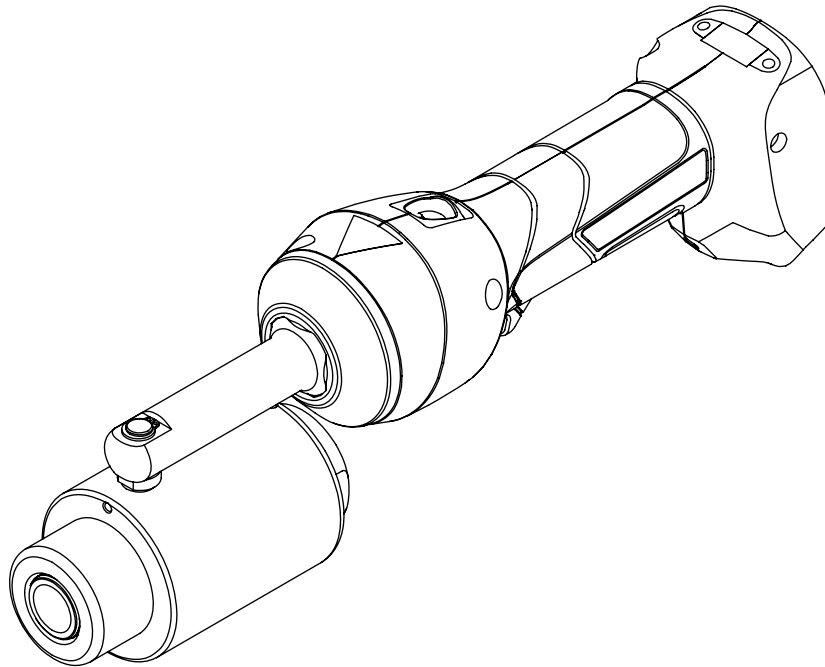


# INSTRUCTION MANUAL



## **Gator<sup>®</sup> Intelli-PUNCH<sup>™</sup> Battery-Hydraulic Knockout Driver**



**Read and understand** all of the instructions and safety information in this manual before operating or servicing this tool.

Register this product at [www.greenlee.com](http://www.greenlee.com)

## Table of Contents

Description .....	2
Safety .....	2
Purpose of this Manual .....	2
Important Safety Information .....	3–5
General Safety Warning* .....	6–7
Identification and Illustration .....	8
Specifications .....	8
Setup and Operation .....	9–10
Capacity .....	11
Maintenance .....	12
Troubleshooting .....	13

## Description

The Greenlee Intelli-PUNCH™ Battery-Hydraulic Knockout Driver is a hand-held, self-contained knockout driver intended to be used with Greenlee punches, dies, and drawstuds for punching holes through mild steel, stainless steel, brass, copper, aluminum, fiberglass, and plastics.

This tool is designed to be used with the following Greenlee accessories:

- Standard punches, dies, and drawstuds
- Slug-Buster® punches, dies, and drawstuds
- Slug-Splitter® punches, dies, and drawstuds
- SPEED PUNCH® Knockout System
- Electronic connector panel punches
- Special shape punches, dies, and drawstuds (“D”, Double “D”, Key, Square, Rectangular, and Oiltight with notches)

Standard and Slug-Buster, Electronic Connector Panel Punches, and special shape punches can punch holes through mild steel, brass, copper, aluminum, fiberglass, and plastics, with limited stainless steel capability. Slug-Splitter punches, dies, and drawstuds are capable of punching through all of these materials and are optimized for stainless steel. Refer to the “Capacity” section in this manual for detailed information on maximum driver rating. Do not exceed the rated capacity of the punch or driver.

This tool is protected by U.S. Patent No. 6,276,186, 6,401,515, 7,086,979, and 7,254,982.

## Safety

Safety is essential in the use and maintenance of Greenlee tools and equipment. This manual and any markings on the tool provide information for avoiding hazards and unsafe practices related to the use of this tool. Observe all of the safety information provided.

## Purpose of this Manual

This manual is intended to familiarize all personnel with the safe operation and maintenance procedures for the following Greenlee tool:

Intelli-PUNCH™ Battery-Hydraulic Knockout Driver

Keep this manual available to all personnel.

Replacement manuals are available upon request at no charge at [www.greenlee.com](http://www.greenlee.com).



**Do not discard this product or throw away!**

For recycling information, go to [www.greenlee.com](http://www.greenlee.com).

All specifications are nominal and may change as design improvements occur. Greenlee, Inc. shall not be liable for damages resulting from misapplication or misuse of its products.

Kwik-Stepper, Slug-Buster, Slug-Splitter, and SPEED PUNCH are registered trademarks and Intelli-PUNCH™ is a trademark of Greenlee, Inc.

# KEEP THIS MANUAL

## IMPORTANT SAFETY INFORMATION



### SAFETY ALERT SYMBOL

This symbol is used to call your attention to hazards or unsafe practices which could result in an injury or property damage. The signal word, defined below, indicates the severity of the hazard. The message after the signal word provides information for preventing or avoiding the hazard.

#### ⚠ **DANGER**

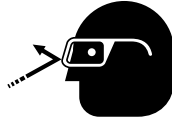
Immediate hazards which, if not avoided, **WILL** result in severe injury or death.


#### ⚠ **WARNING**


Hazards which, if not avoided, **COULD** result in severe injury or death.


#### ⚠ **CAUTION**


Hazards or unsafe practices which, if not avoided, **MAY** result in injury or property damage.


	<p style="text-align: center;"><b>⚠ WARNING</b></p> <p>Wear eye protection when operating or servicing this tool.</p> <p>Failure to wear eye protection could result in serious eye injury from flying debris or hydraulic oil.</p>
------------------------------------------------------------------------------------	-------------------------------------------------------------------------------------------------------------------------------------------------------------------------------------------------------------------------------------

	<p style="text-align: center;"><b>⚠ WARNING</b></p> <p>Skin injection hazard:</p> <p>Do not use hands to check for oil leaks. Oil under pressure easily punctures skin. If injured, seek medical attention immediately to remove oil.</p> <p>Failure to observe this warning could result in serious injury, gangrene, or death.</p>
------------------------------------------------------------------------------------	--------------------------------------------------------------------------------------------------------------------------------------------------------------------------------------------------------------------------------------------------------------------------------------------------------------------------------------

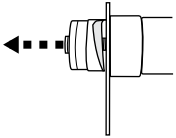
	<p style="text-align: center;"><b>⚠ WARNING</b></p> <p>Do not use solvents or flammable liquids to clean the tool body. Solvents or flammable liquids could ignite and cause serious injury or property damage.</p>
--------------------------------------------------------------------------------------	---------------------------------------------------------------------------------------------------------------------------------------------------------------------------------------------------------------------

	<p style="text-align: center;"><b>⚠ WARNING</b></p> <p>Read and understand all of the instructions and safety information in this manual before operating or servicing this tool.</p> <p>Failure to observe this warning could result in severe injury or death.</p>
-------------------------------------------------------------------------------------	----------------------------------------------------------------------------------------------------------------------------------------------------------------------------------------------------------------------------------------------------------------------

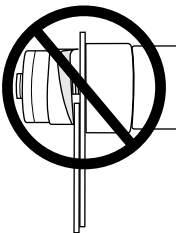
	<p style="text-align: center;"><b>⚠ WARNING</b></p> <p>Pinch points:</p> <ul style="list-style-type: none"> <li>• Remove battery before changing dies, adapters, or jaws.</li> <li>• Keep hands away from the tool head when punching.</li> </ul> <p>Failure to observe these warnings could result in severe injury or death.</p>
--------------------------------------------------------------------------------------	------------------------------------------------------------------------------------------------------------------------------------------------------------------------------------------------------------------------------------------------------------------------------------------------------------------------------------

	<p style="text-align: center;"><b>⚠ WARNING</b></p> <p>Electric shock hazard:</p> <p>This tool is not insulated. When using this unit on or near energized electrical lines, use proper personal protective equipment.</p> <p>Failure to observe this warning could result in severe injury or death.</p>
-------------------------------------------------------------------------------------	-----------------------------------------------------------------------------------------------------------------------------------------------------------------------------------------------------------------------------------------------------------------------------------------------------------

## IMPORTANT SAFETY INFORMATION (cont'd)

	<p style="text-align: center;"><b>⚠ WARNING</b></p> <p>A component failure could throw broken parts.</p> <ul style="list-style-type: none"> <li>• Do not allow anyone to stand in front of the punch or behind the hydraulic ram.</li> <li>• Close access doors or covers on any equipment that is in line with the punch or ram.</li> </ul> <p>Failure to observe this warning could result in severe injury or death.</p>
-----------------------------------------------------------------------------------	-----------------------------------------------------------------------------------------------------------------------------------------------------------------------------------------------------------------------------------------------------------------------------------------------------------------------------------------------------------------------------------------------------------------------------

<p><b>⚠ WARNING</b></p>
<ul style="list-style-type: none"> <li>• Inspect tool for wear or damage. Replace any worn, damaged, or missing components with Greenlee replacement parts. A damaged or improperly assembled tool can break and strike nearby personnel with sufficient force to cause severe injury or death.</li> <li>• Inspect the punch, die, and drawstud for wear or damage. Replace any worn or damaged items with Greenlee replacement parts. Replace any punches that have dull cutting surfaces.</li> </ul>

	<p style="text-align: center;"><b>⚠ WARNING</b></p> <p>Do not attempt to punch a hole through two or more layers of material. This will bend or break the drawstud, and could throw parts with great force.</p> <p>Failure to observe this warning could result in severe injury or death.</p>
------------------------------------------------------------------------------------	------------------------------------------------------------------------------------------------------------------------------------------------------------------------------------------------------------------------------------------------------------------------------------------------

<p><b>⚠ WARNING</b></p>
<p>Do not exceed the rated capacity of this tool. Exceeding the rated capacity could cause a component failure, which could throw broken parts with great force.</p> <p>Failure to observe this warning could result in severe injury or death.</p>

<p><b>⚠ WARNING</b></p>
<p>Set up the tool properly. An improper setup could cause a component to fail and strike nearby personnel with great force.</p> <ul style="list-style-type: none"> <li>• <i>Use only Greenlee punches, dies, and drawstuds. Other manufacturers' components might not withstand the forces generated by this punch driver.</i></li> <li>• <b>Manual Punch Setup:</b> The punch must be threaded completely onto the drawstud. All of the punch threads must be engaged by the drawstud threads. Incomplete assembly could cause a component failure.</li> <li>• <b>Hydraulic Punch Setup:</b> The drawstud must be threaded completely into the driver head. The punch must be threaded completely onto the drawstud. All of the punch threads must be engaged by the drawstud threads. Incomplete assembly could cause a component failure.</li> <li>• <b>SPEED PUNCH Setup:</b> The drawstud must be threaded completely into the driver head. The SPEED LOCK must fully engage and completely close on the drawstud. Incomplete assembly could cause a component failure.</li> </ul> <p>Failure to observe these warnings could result in severe injury or death.</p>

<p><b>⚠ WARNING</b></p>
<p>Do not dispose of batteries in a fire. They will vent fumes and may explode.</p> <p>Failure to observe this warning could result in severe injury from harmful fumes or burns from flying debris.</p>

<p><b>⚠ WARNING</b></p>
<p>Use this tool for the manufacturer's intended purpose only. Use other than that which is described in this manual can result in injury or property damage.</p>

<p><b>⚠ WARNING</b></p>
<p>Ensure the punch cycle is stopped after a hole is made. Failure to do so could cause a part collision which could throw broken parts.</p> <p>Failure to observe this warning could result in severe injury or death.</p>

**IMPORTANT SAFETY INFORMATION (cont'd)****⚠ CAUTION**

The punch driver will fall free when the punch is complete.

- Support the weight of the tool when punching.
- Do not allow anyone to stand beneath an overhead punch.

Failure to observe this warning may result in injury or property damage.

**⚠ CAUTION**

- Do not use this tool for continuous use. After 30 to 40 cycles, allow the tool to cool for 15 minutes.
- Do not secure this tool in a vise. This tool is designed for hand-held operation.
- This tool may be used in damp or wet environments; however, air-drying is recommended before use if the tool becomes soaked. Damage may result when the tool is operated prior to thorough drying when electrical components are soaked.
- Use this tool for the manufacturer's intended purpose only.

Failure to observe these precautions may result in injury or property damage.

**⚠ CAUTION**

Do not allow anything to contact the battery terminals.

- Do not immerse the batteries in liquid. Liquid may create a short circuit and damage the battery. If batteries are immersed, contact your service center for proper handling.
- Do not place the battery into a pocket, tool pouch, or tool box with conductive objects. Conductive objects may create a short circuit and damage the battery.
- Do not place a battery on moist ground or grass. Moisture may create a short circuit and damage the battery.

Failure to observe these precautions may result in injury or property damage.

**⚠ CAUTION**

- Do not store the battery at more than 122 °F (50 °C) or less than -4 °F (-20 °C). Damage to the battery can result.
- Do not use another manufacturer's charger. Other manufacturers' chargers may overcharge and damage the battery.
- Do not attempt to open the battery. It contains no user-serviceable parts.

Failure to observe these precautions may result in injury or property damage.

**⚠ CAUTION**

Do not perform any service or maintenance other than as described in this manual. Injury or damage to the tool may result.

Failure to observe this precaution may result in injury and property damage.

*Note: Keep all decals clean and legible, and replace when necessary.*

**General Safety Warnings\*****⚠ WARNING**

Read all safety warnings, instructions, illustrations and specifications provided with this power tool. Failure to follow all instructions listed below may result in electric shock, fire and/or serious injury.

**SAVE ALL WARNINGS AND INSTRUCTIONS FOR FUTURE REFERENCE.**

The term “power tool” in the warnings refers to your mains-operated (corded) power tool or battery operated (cordless) power tool.

**WORK AREA SAFETY**

- Keep work area clean and well lit. Cluttered or dark areas invite accidents.
- Do not operate power tools in explosive atmospheres, such as in the presence of flammable liquids, gases or dust. Power tools create sparks which may ignite the dust or fumes.
- Keep children and bystanders away while operating a power tool. Distractions can cause you to lose control.

**ELECTRICAL SAFETY**

- Power tool plugs must match the outlet. Never modify the plug in any way. Do not use any adapter plugs with earthed (grounded) power tools. Unmodified plugs and matching outlets will reduce risk of electric shock.
- Avoid body contact with earthed or grounded surfaces, such as pipes, radiators, ranges and refrigerators. There is an increased risk of electric shock if your body is earthed or grounded.
- Do not expose power tools to rain or wet conditions. Water entering a power tool will increase the risk of electric shock.
- Do not abuse the cord. Never use the cord for carrying, pulling or unplugging the power tool. Keep cord away from heat, oil, sharp edges or moving parts. Damaged or entangled cords increase the risk of electric shock.
- When operating a power tool outdoors, use an extension cord suitable for outdoor use. Use of a cord suitable for outdoor use reduces the risk of electric shock.
- If operating a power tool in a damp location is unavoidable, use a **RESIDUAL CURRENT DEVICE (RCD)** protected supply. Use of an RCD reduces the risk of electric shock.

**PERSONAL SAFETY**

- Stay alert, watch what you are doing and use common sense when operating a power tool. Do not use a power tool while you are tired or under the influence of drugs, alcohol or medication. A moment of inattention while operating power tools may result in serious personal injury.
- Use personal protective equipment (PPE). Always wear eye protection. Protective equipment such as dust mask, non-skid safety shoes, hard hat, or hearing protection used for appropriate conditions will reduce personal injuries.
- Prevent unintentional starting. Ensure the switch is in the off-position before connecting to power source and/or **BATTERY** pack, picking up or carrying the tool. Carrying power tools with your finger on the switch or energizing power tools that have the switch on invites accidents.
- Remove any adjusting key or wrench before turning the power tool on. A wrench or a key left attached to a rotating part of the power tool may result in personal injury.
- Do not overreach. Keep proper footing and balance at all times. This enables better control of the power tool in unexpected situations.
- Dress properly. Do not wear loose clothing or jewelry. Keep your hair, clothing and gloves away from moving parts. Loose clothes, jewelry or long hair can be caught in moving parts.
- If devices are provided for the connection of dust extraction and collection facilities, ensure these are connected and properly used. Use of dust collection can reduce dust-related hazards.
- Do not let familiarity gained from frequent use of tools allow you to become complacent and ignore tool safety principles. A careless action can cause severe injury within a fraction of a second.

**POWER TOOL USE AND CARE**

- Do not force the power tool. Use the correct power tool for your application. The correct power tool will do the job better and safer at the rate for which it was designed.
- Do not use the power tool if the switch does not turn it on and off. Any power tool that cannot be controlled with the switch is dangerous and must be repaired.
- Disconnect the plug from the power source and/ or remove the **BATTERY** pack, if detachable, from the power tool before making any adjustments, changing accessories, or storing power tools. Such preventive safety measures reduce the risk of starting the power tool accidentally.

- Store idle power tools out of the reach of children and do not allow persons unfamiliar with the power tool or these instructions to operate the power tool.
- Power tools are dangerous in the hands of untrained users.
- Maintain power tools and accessories. Check for misalignment or binding of moving parts, breakage of parts and any other condition that may affect the power tool's operation. If damaged, have the power tool repaired before use. Many accidents are caused by poorly maintained power tools.
- Keep cutting tools sharp and clean. Properly maintained cutting tools with sharp cutting edges are less likely to bind and are easier to control.
- Use the power tool, accessories and tool bits etc. in accordance with these instructions, taking into account the working conditions and the work to be performed. Use of the power tool for operations different from those intended could result in a hazardous situation.
- Keep handles and grasping surfaces dry, clean and free from oil and grease. Slippery handles and grasping surfaces do not allow for safe handling and control of the tool in unexpected situations.

#### **BATTERY TOOL USE AND CARE**

- Recharge only with the charger specified by the manufacturer. A charger that is suitable for one type of BATTERY pack may create a risk of fire when used with another BATTERY pack.
- Use power tool only with specifically designated BATTERY packs. Use of any other BATTERY packs may create a risk of injury and fire. When BATTERY pack is not in use, keep it away from other metal objects, like paper clip, coins, keys, nails, screws or other small metal objects, that can make a connection from one terminal to another. Shorting the BATTERY terminals together may cause burns or a fire.
- Under abusive conditions, liquid may be ejected from the BATTERY; avoid contact. If contact accidentally occurs, flush with water. If liquid contacts eyes, additionally seek medical help. Liquid ejected from the BATTERY may cause irritation or burns.
- Do not use a BATTERY pack or tool that is damaged or modified. Damaged or modified batteries may exhibit unpredictable behavior resulting in fire, EXPLOSION or risk of injury.
- Do not expose a BATTERY pack or tool to fire or excessive temperature. Exposure to fire or temperature above 265°F (130°C) may cause explosion.

- Follow all charging instructions and do not charge the BATTERY pack or tool outside the temperature range specified in the instructions. Charging improperly or at temperatures outside the specified range may damage the battery and increase the risk of fire.

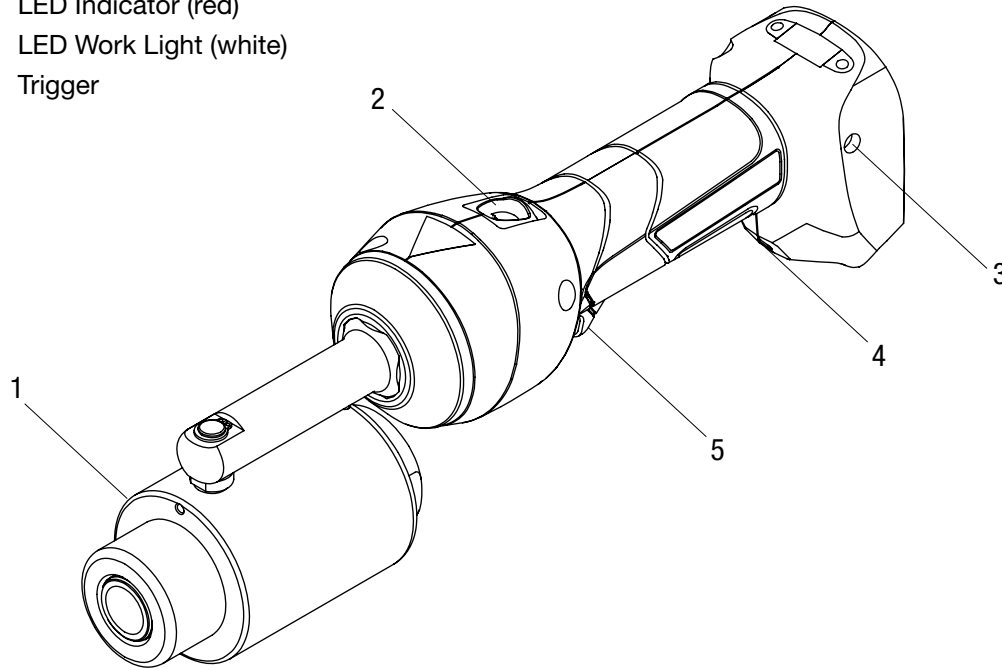
#### **SERVICE**

- Have your power tool serviced by a qualified repair person using only identical replacement parts. This will ensure that the safety of the power.

*\* The text used in the General Power Tool Safety Warnings section of this manual is required from the applicable EN 62841-1 standard to which this tool is tested. This section contains general safety practices for many different types of power tools. Not every precaution applies to every tool, and some may not apply to this tool.*

**Identification and Illustration**

- 1. Punching Head
- 2. Return Button
- 3. LED Indicator (red)
- 4. LED Work Light (white)
- 5. Trigger



**Specifications**

Knockout driver (without 18V, 3.0 Ah lithium-ion battery)

Length.....	16.1" (408.9 mm)
Width .....	3.1" (79.8 mm)
Depth.....	4.7" (120.5 mm)
Weight.....	4.7 lb (2.1 kg)
Force.....	11.2 tons (100 kN)
Hydraulic Oil .....	52057878 biodegradable hydraulic fluid
Recommended Operating Temperature Range.....	5 °F to 122 °F (-15 °C to 50°C)
Battery Charger.....	Read the instructions supplied with the battery charger

52047087	120 VAC corded adapter	52054992	Li (18 V) to NiCe, NiMH (12 V) charger adapter
52047088	230 VAC corded adapter	52049201	120 VAC, 18V charger
52049189	18V, 3.0 Ah lithium-ion battery	52049202	230 VAC, 18V charger
52070024	18V, 3.0 Ah lithium-ion battery	52049204	12 VDC, 18V charger

## Setup and Operation

### Punching

*Note: The Intelli-PUNCH™ driver is a microprocessor-controlled hydraulic punching tool with an automatic retraction feature that will engage after punch completion to save time and save the operator from having to manually retract the tool. However, care should be taken to make sure punches and dies are not bottomed out and that the tool releases upon punch completion. There are circumstances that can cause the automatic retraction function to fail.*

1. Refer to the hydraulic punch instruction manual for proper punch, die, and drawstud selection and setup.
  2. Select the appropriate punch, die, and drawstud for the desired hole size.
  3. Determine and mark the exact location for the hole. Use a Greenlee Kwik-Stepper® step bit to drill a pilot hole slightly larger than the drawstud being used.
  4. Depress the Return button to reset the ram to the starting position.
  5. Thread the appropriate drawstud completely into the ram in the punching head.
  6. Slide the corresponding die onto the drawstud. The open end of the die should face away from the punching head.
  7. Insert the drawstud through the pilot hole in the material being punched.
  8. Thread the punch (cutting edge facing the material) onto the drawstud until the punch assembly is tight on the material surface.
- Note:*
- All of the punch threads must be engaged with the drawstud threads. If any punch threads are not engaged, reassemble the setup.
  - For SPEED PUNCH®, slide the punch onto the drawstud (cutting edge facing the material) and secure the SPEED LOCK to the drawstud.
9. Press and hold the trigger to complete the punch cycle. The Intelli-PUNCH™ driver will automatically retract when it senses the punch is completely through the material.

## IMPORTANT

- Under certain circumstances, such as with thin sheet steel or very low punch forces, this unit may not initiate auto-retract or auto-retract may be initiated prematurely. Care should be taken to not bottom out punches, which will cause damage after punch completion. In the event auto-retract is prematurely activated, retry punching the hole.
- The auto-retract feature can be overridden at any time to stop ram retraction by depressing the trigger.
- If overpressure is reached during the punch cycle, the tool will automatically shut off and return the ram to the starting position. This may indicate the operation attempted is beyond the capacity of the tool. The overpressure condition will also occur when the tool reaches full stroke. (Care should be taken to avoid driving this tool to full stroke, as this may cause damage to the punch and die).

10. Unscrew the punch from the drawstud. Slide the die off the drawstud and remove any slugs from the die. *Note: For SPEED PUNCH®, remove the SPEED LOCK. Slide the punch off the drawstud; then slide the die off the drawstud and remove any slugs from the die.*

### Charging the Battery

Read the instructions supplied with the battery charger.

### LED Work Light (white)

This LED automatically turns on when the trigger is pulled. It remains on for 10 seconds after the trigger is released.

### LED Indicator (red)

This tool is equipped with a special circuit board incorporating several important features to inform the user about the current status of the unit. The LED signals in the following cases:

What happens	Signal	What it means
Constant light for 20 seconds at end of cycle	■■■■	Battery charge is below 17 V at beginning of cycle
Tool will <b>not</b> start, and constant light for 20 seconds when trigger is released	■■■■	Battery charge is below 16 V at beginning of cycle
Tool will stop, and constant light for 20 seconds after trigger is released	■■■■	Battery voltage drops below 13 V during cycle
Tool will stop, and flashing light for 20 seconds when trigger is released	●●●●	Motor current exceeds 20 A during cycle Circuit has become too hot

**Setup and Operation (cont'd)**
**⚠ WARNING**

- Inspect tool for wear or damage. Replace any worn, damaged, or missing components with Greenlee replacement parts. A damaged or improperly assembled tool can break and strike nearby personnel with sufficient force to cause severe injury or death.
- Inspect the punch, die, and drawstud for wear or damage. Replace any worn or damaged items with Greenlee replacement parts. Replace any punches that have dull cutting surfaces.

**⚠ CAUTION**

- Do not use this tool for continuous use. After 30 to 40 cycles, allow the tool to cool for 15 minutes.
- Do not secure this tool in a vise. This tool is designed for hand-held operation.
- This tool may be used in damp or wet environments; however, air-drying is recommended before use if the tool becomes soaked. Damage may result when the tool is operated prior to thorough drying when electrical components are soaked.
- Use this tool for the manufacturer's intended purpose only.

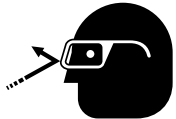
Failure to observe these precautions may result in injury or property damage.


**⚠ WARNING**

Electric shock hazard:

This tool is not insulated. When using this unit on or near energized electrical lines, use proper personal protective equipment.

Failure to observe this warning could result in severe injury or death.


**⚠ WARNING**

Wear eye protection when operating or servicing this tool.

Failure to wear eye protection could result in serious eye injury from flying debris or hydraulic oil.


**⚠ WARNING**

Pinch points:

- Remove battery before changing dies, adapters, or jaws.
- Keep hands away from the tool head when punching.

Failure to observe these warnings could result in severe injury or death.

## Capacity

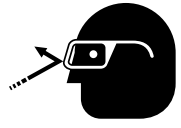
### Intelli-PUNCH™ Knockout Driver Rating


<b>STAINLESS STEEL</b>	
<b>Slug-Splitter and Large Diameter Punches</b>	
<b>Pipe and Conduit Size</b>	<b>Maximum Driver Rating</b>
1/2" to 3"	10 ga (0.134", 3mm)
3-1/2" to 4"	12 ga (0.104", 2.5mm)


<b>MILD STEEL</b>	
<b>Standard and Slug-Buster Punches</b>	
<b>Pipe and Conduit Size</b>	<b>Maximum Driver Rating</b>
1/2" to 4"	10 ga (0.134", 3mm)


*Note: Please consult the hydraulic punch instruction manual for punch, drawstud, and die selection.*

**Maintenance**

	<b>⚠ WARNING</b>
	<p>Wear eye protection when operating or servicing this tool.</p> <p>Failure to wear eye protection could result in serious eye injury from flying debris or hydraulic oil.</p>

	<b>⚠ WARNING</b>
	<p>Skin injection hazard:</p> <p>Do not use hands to check for oil leaks. Oil under pressure easily punctures skin. If injured, seek medical attention immediately to remove oil.</p> <p>Failure to observe this warning could result in serious injury, gangrene, or death.</p>

	<b>⚠ WARNING</b>
	<p>Do not use solvents or flammable liquids to clean the tool body. Solvents or flammable liquids could ignite and cause serious injury or property damage.</p>

	<b>⚠ WARNING</b>
	<p>Pinch points:</p> <ul style="list-style-type: none"> <li>• Remove battery before changing dies, adapters, or jaws.</li> <li>• Keep hands away from the tool head when punching.</li> </ul> <p>Failure to observe these warnings could result in severe injury or death.</p>

<b>IMPORTANT</b>
Relief valve adjustments must be done by an authorized service center.

**Daily**
*Before use:*

1. Inspect the tool for wear or damage, such as cracks, gouges, or chips.
2. Inspect the tool for damage or leaks.
3. Inspect the rotation of the head assembly. Fully return the ram. The head should rotate freely. If damage is detected, contact Greenlee customer service at 800-435-0786 for warranty service or repair.

*After use:*

1. Use a damp cloth and mild detergent to clean the housing. Allow the housing to dry.
2. Fully return the ram. Place the tool in the carrying case and store in a cool, dry place.
3. If necessary, recharge the batteries. Refer to the instructions supplied with the battery charger.

## Troubleshooting

### Before You Begin

1. Make sure that the battery is charged. Recheck the battery after several minutes to make sure the battery is holding its charge.
2. Use a **nonflammable** contact cleaner or pencil eraser to clean the electrical contacts on the battery and tool.
3. Reinstall the battery and check the tool again.

<b>Problem</b>	<b>Possible Cause</b>	<b>Probable Remedy</b>
Tool is inoperative.	Dirt, contaminants, etc. in ram area of tool.	Clean tool.
	Tool battery contacts damaged.	Reform contacts.
	Tool components worn or damaged.	Return tool to a Greenlee Authorized Service Center.
Motor is inoperative.	Low or uncharged battery.	Try known charged battery. Inoperative battery may be discharged or may have reached life expectancy.
	Broken switch components.	Return tool to a Greenlee Authorized Service Center.
Motor runs but tool will not complete a cycle.	Oil level low.	Return tool to a Greenlee Authorized Service Center.
	Air in hydraulic system.	Pull trigger and hold return button simultaneously. Run for approximately 10 seconds, and then attempt to punch. If unsuccessful, contact Greenlee customer service at 800-435-0786 for warranty service or repair.
	Cold oil.	Pull trigger and hold return button simultaneously to warm oil. Store tool in warm area.
Dies stop during operation.	Oil level low.	Return tool to a Greenlee Authorized Service Center.
	Air in hydraulic system.	Pull trigger and hold return button simultaneously. Hold for approximately 10 seconds.
LED glows for 20 seconds.	Battery charge low.	Charge or replace battery.
Tool loses oil.	Damaged internal seal.	Return tool to a Greenlee Authorized Service Center.

